

The Greater Addo National Park: What Would You Do?

CGG30

Unit 1

The Issue:

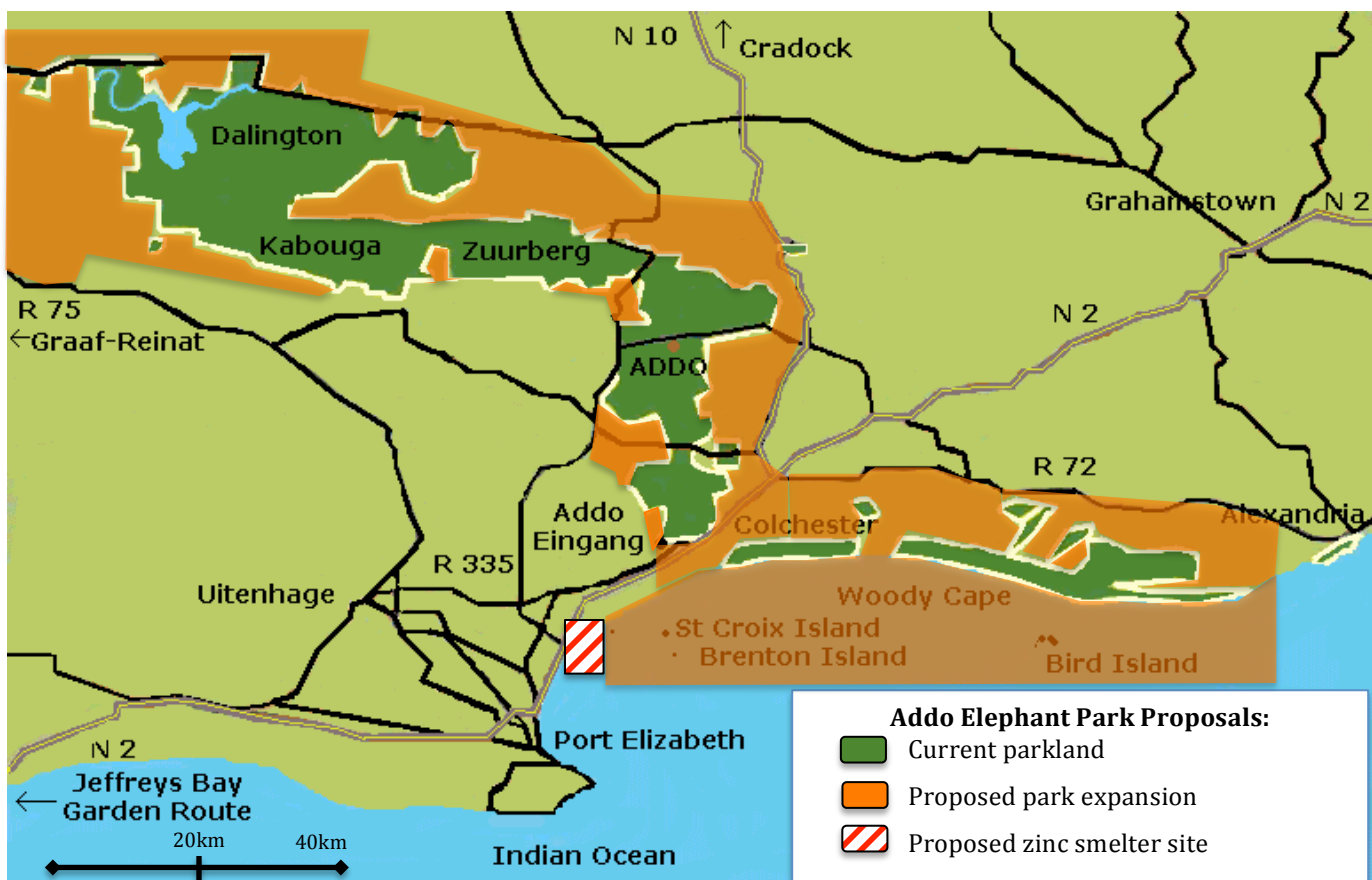
The Addo Elephant National Park in South Africa is at a crossroads. The park suffers from poaching, endangering the animals that live there, especially the parks elephants. Because of broken borders between the park and farmland, elephants also venture into farmer's crops, trampling on them, and occasionally becoming injured on fences (which are also destroyed). Many of the farmers also have goats and sheep, which then escape through broken fences. This is an economic loss for the region through lost wool and dairy products. Furthermore, industrial development would also like to purchase land near the park and farms to build zinc smelters to process raw zinc into refined the metal. This would add many jobs to the region, and provide another industry to support the economy. The government of South Africa needs to decide how to best use their land to keep their citizens happy and make the best economical and environmental choice.

The Proposals:

1. Expand the borders of the Addo Elephant National Park from 12,00 hectares, to 368,000 hectares. This would turn most of the farmland into parkland, and create one continuous park border. The park would be renamed the Greater Addo National Park, and would become a tourist destination in the region.

2. Create a buffer between the Addo Elephant National Park and farmland to reduce the damage caused by wandering elephants. The Park should cull jackal and lynx populations, which prey on the farmers' goats and sheep, and then create more space for elephants within the park (where other animals lived). Farmers should also be compensated for their losses by the park/government.

3. Construct a zinc smelter. This would take up about 10,000 hectares of land just south of the park and farmland. This project would take away from the proposed park expansion. It would be visible from many parts of the park, and will add more shipping traffic to the coast. This would bring economic benefits to the region by adding construction and supply jobs, as well as those directly employed at the smelter, over the projects 25-year span.



What to Do:

1. Evenly distribute students numbering them from 1-6
2. Based on your number, you will be playing one of the following roles below
3. Get together with other people who are playing the same role as you are and work on developing a case that will help you get your viewpoints across. Use critical thinking, and make a good argument. You can start with the research sites given to you, but you don't have to stop there. Remember a good argument will not only explain why your viewpoint is the right choice, but also explain why the other viewpoints are not as good of a choice as yours.
4. If you are role #6, you will be discussing what the needs of South Africans are, and using your research materials to get an idea on what you think might be best
5. You will then form groups with representatives from each role, and begin a discussion about what to do with these three proposals:
 - a. To expand the Addo Elephant National Park
 - b. To protect farm land
 - c. To approve a zinc smelter in Port Elizabeth
6. Take turns presenting your viewpoints, and keep your discussion civil
7. The one to decide what to do in the end will be role #6, but you can always give your opinion and input in to the situation.
8. Report as a group what you decided to do and why.

Your Role:

1. Director of Park Planning, Addo Elephant National Park:

Your job:

- a) To get the planned expansion of the park passed.

Your viewpoints:

- a) The park needs this expansion to prevent the loss of life to elephants, and to make an uninterrupted territory large enough for these animals to live and sustain their populations.
- b) The elephants (and other wildlife) need to be protected. They are one of the main reasons tourists come to the park, this makes a lot of jobs for people in the park area.
- c) Farmers are being short sighted, by blocking this important expansion, they are reducing the economic income we could be making through tourism. They are also making it difficult to preserve the wildlife that is so important to our economy and identity as a people.
- d) The Coega Refinery Project will cause environmental damage to the park by spilling chemicals into the air and water. It will be visible from many places in the park, and nobody wants to come to the park to see a refinery.

Consider researching:

- a) <https://www.sanparks.org/parks/addo/>
- b) https://www.huffingtonpost.com/michael-markarian/eco-tourism-worth-more-to_b_8455186.html
- c) <https://www.southafrica.net/gl/en/travel>

Your Role:

2. South African Environment Project Researcher:

Your job:

- a) To help everyone become aware of the best ways of protecting and preserving the environment, as well as warning people about activities that can harm the environment

Your viewpoints:

- a) The expansion of the park will help to create habitat for wildlife that is currently not sufficiently protected
- b) The expansion of the park to include the ocean is an important step in protecting the marine environment for everyone (animals and people)
- c) Tourism businesses, if done right can be economically profitable, and environmentally sustainable
- d) The Coega smelter project will cause a great deal of long-term environmental damage in the ocean and to all wildlife in the area (ocean and land), for a short-term economic gain. Government should not pursue this plan.

Consider researching:

- a) <http://traveltips.usatoday.com/advantages-ecotourism-61576.html>
- b) <http://www.okinternational.org/mining>
- c) <https://howtoconserve.org/2015/11/20/marine-protected-areas/>

Your Role:

3. Farmers Union Representative:

Your job:

- a) To ensure that farmers are getting compensated for their losses due to elephants damaging their property, and causing sheep/goats to get lost
- b) To make people aware of the fact that these farms are a vital part of the South African economy, and should not be sacrificed for the development of a park that is already under utilizing it's land.

Your viewpoints:

- a) The park expansion proposal is not a good idea, and very little would be done to compensate farmers for their long-term losses (should their farms be purchased by the park)
- b) South African mohair produced by livestock accounts for 60% of the world's supply, how can we sacrifice such a powerful market share?
- c) Both the farmers, and the textiles industries in the region benefit from the farms continuing to operate. If we close some of the farms, it will reduce the amount of dairy and wool products made, reducing the number of people employed in the region
- d) Government should think of people and their jobs before expanding a park to protect animals.

Consider researching:

- a) [http://www1.agric.gov.ab.ca/\\$department/deptdocs.nsf/all/sg14663](http://www1.agric.gov.ab.ca/$department/deptdocs.nsf/all/sg14663)
- b) <https://news.nationalgeographic.com/news/2013/12/131210-wildlife-conservation-compensation-predators-science/>
- c) <https://www.farmersweekly.co.za/opinion/by-invitation/sas-goat-farmers-must-get-business/>

Your Role:

4. Sheep & Goat Farm Owner in Colchester:

Your job:

- a) To protect my farm from being purchased in the proposed park expansion

Your viewpoints:

- a) The government shouldn't take my farm away from me and give it to a park
- b) Elephants are destroying my livelihood, by breaking fences, damaging crops and letting my sheep/goats run away
- c) The Addo Elephant National Park should be compensating me for damages
- d) If I am forced to sell my farm, I won't have a job!

Consider researching:

- a) <http://www.goatfarming.in/goat-farming-cost-profit>
- b) [http://www1.agric.gov.ab.ca/\\$department/deptdocs.nsf/all/sg14663](http://www1.agric.gov.ab.ca/$department/deptdocs.nsf/all/sg14663)
- c) <https://www.farmersweekly.co.za/opinion/by-invitation/sas-goat-farmers-must-get-business/>

Your Role:

5. Coega Refinery Project Director:

Your job:

- a) To convince the government that opening a zinc smelter in Port Elizabeth is a good move for the country.

Your viewpoints:

- a) We will provide thousands of jobs through refining and distributing zinc, not to mention all the secondary jobs that will be created because we're here
- b) When the plant has passed its life, we can always build a new one with updated technologies to make it better
- c) The park is over reacting to the fact that you will be able to see the smelter from the park, not that many people will care.
- d) The environmentalists are over-stating the facts. There might be some catastrophic damage to marine life, but there might not, just like there might be a hurricane and there might not.

Consider researching:

- a) https://en.wikipedia.org/wiki/Zinc_smelting
- b) http://www.economicsonline.co.uk/Questions/Zinc_zinc.html
- c) https://prezi.com/ofym_xnup-d0/pros-and-cons-of-mining-metals-ores/
- d) <http://www.coega.co.za/Content2.aspx?objID=196>

Your Role:

6. South African National Parks Board Representative:

Your job:

- a) To choose the course of action that is best for the people of South Africa; economically, socially, and environmentally.
 - a. To approve **or** reject the proposed park expansion
 - b. To approve **or** reject the request of the farmers to be paid for more damages by the park
 - c. To approve **or** reject the Coega Refinery plan.

Your viewpoints:

- a) I want to see maximum economic return on investments
- b) I want our employment to be sustainable and long-term
- c) I want to protect the environment in South Africa
- d) I want people to be happy with me so I can keep my job.

Consider researching:

- a) <http://traveltips.usatoday.com/advantages-ecotourism-61576.html>
- b) https://courses.cit.cornell.edu/crp384/2009reports/Pinsof&Sanahaji_Ecotourism%20in%20South%20africa.pdf
- c) <https://news.nationalgeographic.com/news/2013/12/131210-wildlife-conservation-compensation-predators-science/>
- d) https://prezi.com/ofym_xnup-d0/pros-and-cons-of-mining-metals-ores/